



This Quick Start Guide already contains minimalist instructions for different users (Vietnamese, Japanese, German, Italian, French, and Spanish) We avoid printing these large manuals in an effort to limit our impact on the environment.

Scan the code below for a more detailed installation guide on how to operate your camera.

EN

Hướng dẫn bắt đầu nhanh này đã bao gồm các hướng dẫn cơ bản nhất. Để tìm hiểu thêm về các cài đặt chi tiết, hãy quét mã QR ở trên cùng để tìm hiểu cách vận hành.

VN

このクイックスタートガイドには、すでに最も基本的な手順が記載されています。より詳細なセットアップについては、上部のQRコードをスキャンして、カメラの操作方法をご確認ください。

JP

Diese Schnellstartanleitung enthält bereits die grundlegendsten Anweisungen. Für eine detailliertere Einrichtung scannen Sie den QR-Code oben, um zu erfahren, wie Sie Ihre Kamera bedienen.

DE

Questa Guida rapida contiene già le istruzioni di base. Per una configurazione più dettagliata, scansionare il codice QR in alto per imparare a utilizzare la fotocamera.

IT

Ce guide de démarrage rapide contient déjà les instructions les plus élémentaires. Pour une configuration plus détaillée, scannez le code QR en haut de page pour apprendre à utiliser votre appareil photo.

FR

Esta Guía de inicio rápido ya contiene las instrucciones más básicas. Para una configuración más detallada, escanea el código QR de la parte superior para aprender a manejar tu cámara.

ES

IN THE BOX



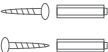
WiFi Camera*1



Reset Pin*1



Mounting Bracket*1



screws plastic anchors



USB Cable*1

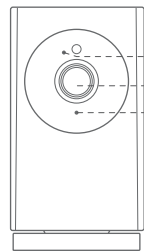


USB Adapter*1

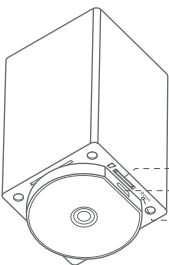


Quick Start Guide*1

PRODUCT OVERVIEW



Status LED
Lens
Microphone



SD card slot
Power input
Reset button

CAMERA SETUP

1. Download the ugoho.me APP and create a new account.



2. Connect the camera to a power outlet and wait for 5-10 seconds until it rotates.

3. Open the APP and tap "+" to add your camera to the system.

4. Follow the on-screen instructions to complete the setup.

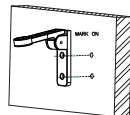
Note: Camera setup only support 2.4GHz WiFi (5GHz network is not supported.)

CAMERA INSTALLATION

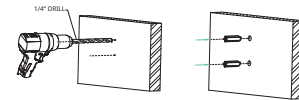
The camera can be placed on a table, or shelf, or can be mounted on a wall or a ceiling. Select a location and height where you can get the desired view, and can reach a power outlet easily. The camera needs to be powered on while using. Keep the camera away from anything (wall or window) that may obstruct the view. Do this to avoid infrared reflection which can have a negative impact on night vision performance.

To mount this indoor camera on a ceiling or on a wall, follow the steps below:

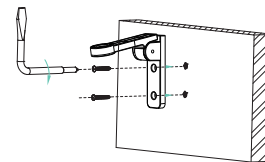
1. Using bracket as a template, mark points on the ceiling or wall to help the drilling process.



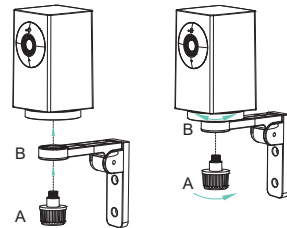
2. Drill holes with a 1/4 inch drill bit.



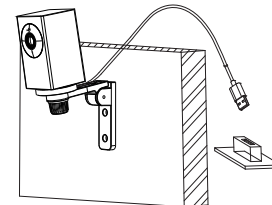
3. Align the holes on the mounting plate with those in the ceiling. Insert the anchors into the holes (anchors are necessary for walls that are made out of hard materials such as concrete, brick, or stucco.) Fix the screws with a screwdriver to fasten the mounting bracket to the ceiling or wall.



4. Place part A into the bracket part B, securely screw the camera on the top.



5. Plug in the USB cable to a power outlet, then finish.



NOTICE

FCC Statement

This device complies with Part 15 of the FCC Rules. Operation is subject to the following two conditions: (1) this device may not cause harmful interference, and (2) this device must accept any interference received, including interference that may cause undesired operation.

Warning

Changes or modifications not expressly approved by the party responsible for compliance could void the user's authority to operate the equipment.

FCC Radio Frequency Exposure Statement

The device has been evaluated to meet general RF exposure requirements. The device can be used in fixed/ mobile exposure condition. The min separation distance is 20cm.

Notice: Shielded cables

All connections to other computing devices must be made using shielded cables to maintain compliance with FCC regulations.

CUSTOMER SERVICE

Warranty

Puwell Technology Inc. warrants this product to be free of defects in materials or workmanship for one year. This warranty does not include damage resulting from accidents or misuse. Damage from unauthorized service or modification of the product or of any furnished component will void this warranty in its entirety. This warranty is expressly in lieu of all other warranties, expressed or implied, including any warranty, representation, or condition of merchantability or that the products are fit for any particular purpose or use, and specifically in lieu of all special, indirect, incidental, or consequential damages. To obtain service/ replacement, please contact support@ugoho.me . Please allow up to seven (7) business days for your replacement to be processed.

Contact Us

✉ support@ugoho.me

📞 @UGOHOME

📺 @UGOHOME

Lắp đặt camera

Chọn vị trí lắp đặt

Camera có thể đặt trên bàn, hoặc kệ, hoặc có thể được gắn lên tường hoặc trần. Hãy chọn một vị trí và chiều cao phù hợp để bạn có được góc nhìn mong muốn và dễ dàng tiếp cận ổ điện. Camera cần được cấp điện khi sử dụng. Hãy đảm bảo giữ camera cách xa bất cứ vật gì (tường hoặc cửa sổ) có thể cản trở tầm nhìn. Làm điều này để tránh phản xạ hồng ngoại có thể ảnh hưởng tiêu cực đến hiệu suất quan sát ban đêm của camera.
Lưu ý: Camera chỉ hỗ trợ Wifi 2.4GHz (không hỗ trợ Wifi 5GHz).

Thiết lập hệ thống

1. Tải ứng dụng ugoho.me và tạo tài khoản bằng gmail.
2. Kết nối Camera với ổ cắm điện và đợi 5-10 giây cho đến khi Camera xoay vòng.
3. Truy cập vào ứng dụng and nhấn "+" nhấn để thêm camera của bạn vào hệ thống.
4. Thực hiện theo các hướng dẫn trên màn hình để hoàn tất thiết lập.

VN

カメラ設置

実装場所を選択する

カメラは、テーブルや棚の上に置いたり、壁や天井に取り付けたりすることができます。設置する場所や高さは、見たい景色を見ることができ、かつカメラが電源コンセントに届きやすい場所を選んでください。取り付けの前に、カメラの電源プラグをコンセントから抜いてください。

*カメラを視界を遮るもの(壁や窓)から遠ざけてください。赤外線の影響が暗視性能に悪影響を及ぼすのを防ぐため、このようにしてください。

設定方法

- 1.App Store (iOS端末)またはGoogle Play (Android端末)からugoho.meアプリをダウンロードしてください。
- 2.カメラを電源コンセントに接続します。
- 3.アプリを起動し、「+」をタップしてカメラをシステムに追加します。カメラをシステムに追加します
- 4.画面の指示に従い、セットアップを完了します。
ご注意:カメラの設定は2.4GHz WiFiのみ対応(5GHzネットワークは非対応)。

JP

KAMERAINSTALLATION

Wählen Sie einen Ort für die Montage

Die Kamera kann auf einen Tisch oder ein Regal gestellt oder an einer Wand oder Decke montiert werden. Wählen Sie einen Ort und eine Höhe, an dem Sie die gewünschte Ansicht erhalten und die Kamera eine Steckdose leicht erreichen kann. Trennen Sie die Kamera vor der Montage von der Netzsteckdose.

*Halten Sie die Kamera von allem fern (Wand oder Fenster), das die Sicht behindern könnte. So vermeiden Sie Infrarotreflexionen, die sich negativ auf die Nachtsichtleistung auswirken können.

EINRICHTEN DES SYSTEMS

1. Laden Sie die ugoho.me-App aus dem App Store (iOS-Geräte) oder von Google Play (Android-Geräte) herunter.
2. Schließen Sie die Kamera an eine Steckdose an.
3. Öffnen Sie die APP und tippen Sie auf "+", um Ihre Kamera dem System hinzuzufügen.
4. Folgen Sie den Anweisungen auf dem Bildschirm, um die Einrichtung abzuschließen.
Hinweis: Die Einrichtung der Kamera unterstützt nur 2.4GHz WiFi (5GHz Netzwerk wird nicht unterstützt.)

DE

INSTALLAZIONE DELLA TELECAMERA

Scegliere la posizione di installazione.

La telecamera può essere utilizzata in molti luoghi diversi: è possibile posizionarla su tavoli e mensole all'interno di una stanza, o su pareti esterne e soffitti all'aperto. In ogni caso, è fondamentale scegliere la posizione e l'altezza migliori per garantire la copertura visiva della ripresa, nonché la vicinanza a una presa di corrente per un facile collegamento all'alimentazione.

Togliere la telecamera dalla presa di corrente prima dell'installazione.

*Assicurarsi che la telecamera abbia una visione ampia senza essere ostruita da oggetti vicini (come pareti o finestre), ciò evita la riflessione dei raggi infrarossi che potrebbe influire negativamente sulle prestazioni di visione notturna.

IMPOSTAZIONE DEL SISTEMA

1. Scaricare l'applicazione ugoho.me dall'App Store (dispositivi iOS) o da Google Play (dispositivi Android).
2. Collegare la telecamera a una presa di corrente.
3. Aprire l'app e toccare "+" per aggiungere la telecamera al sistema.
4. Seguire le istruzioni sullo schermo per completare la configurazione.

Nota: la configurazione della telecamera supporta solo il WiFi a 2,4 GHz (la rete a 5 GHz non è supportata)

IT

INSTALLATION DE LA CAMÉRA

Choisir un emplacement pour le montage

Pour installer la caméra, vous pouvez choisir de la placer sur une table, une étagère, ou de la fixer au mur ou au plafond. Assurez-vous de choisir un emplacement et une hauteur qui vous permettent d'obtenir la vue souhaitée et où la caméra peut facilement être branchée à une prise de courant. Avant de la monter, n'oubliez pas de débrancher l'appareil de la prise de courant.

*Pour éviter les reflets infrarouges qui pourraient affecter négativement la vision nocturne, éloignez la caméra de tout élément susceptible d'obstruer la vue.

MISE EN PLACE DU SYSTÈME

1. Téléchargez l'application ugoho.me depuis l'App Store (appareils iOS) ou Google Play (appareils Android).
 2. Branchez l'appareil photo sur une prise de courant.
 3. Ouvrez l'APP et appuyez sur "+" pour ajouter votre caméra au système.
 4. Suivez les instructions à l'écran pour terminer la configuration.
- Remarque : la configuration de la caméra ne prend en charge que le WiFi 2,4 GHz (le réseau 5 GHz n'est pas pris en charge).

FR

INSTALACIÓN DE LA CÁMARA

Seleccione una ubicación para el montaje

La cámara se puede colocar sobre una mesa o estantería, o se puede montar en una pared o en el techo. Seleccione una ubicación y una altura en las que pueda obtener la vista deseada y la cámara pueda llegar fácilmente a una toma de corriente. Desconecte la cámara de la toma de corriente antes de montarla.

*Mantenga la cámara alejada de cualquier elemento (pared o ventana) que pueda obstruir la visión. Haga esto para evitar reflejos infrarrojos que pueden tener un impacto negativo en el rendimiento de la visión nocturna.

CONFIGURACIÓN DEL SISTEMA

1. Descarga la aplicación ugoho.me desde la App Store (dispositivos iOS) o Google Play (dispositivos Android).
 2. Conecta la cámara a una toma de corriente.
 3. Abre la APP y toca "+" para añadir tu cámara al sistema.
 4. Siga las instrucciones en pantalla para completar la configuración.
- Nota: La configuración de la cámara sólo admite WiFi de 2,4 GHz (la red de 5 GHz no es compatible).

ES

ugohome

Quick Start Guide

1080P PTZ WI-FI SECURITY CAMERA

